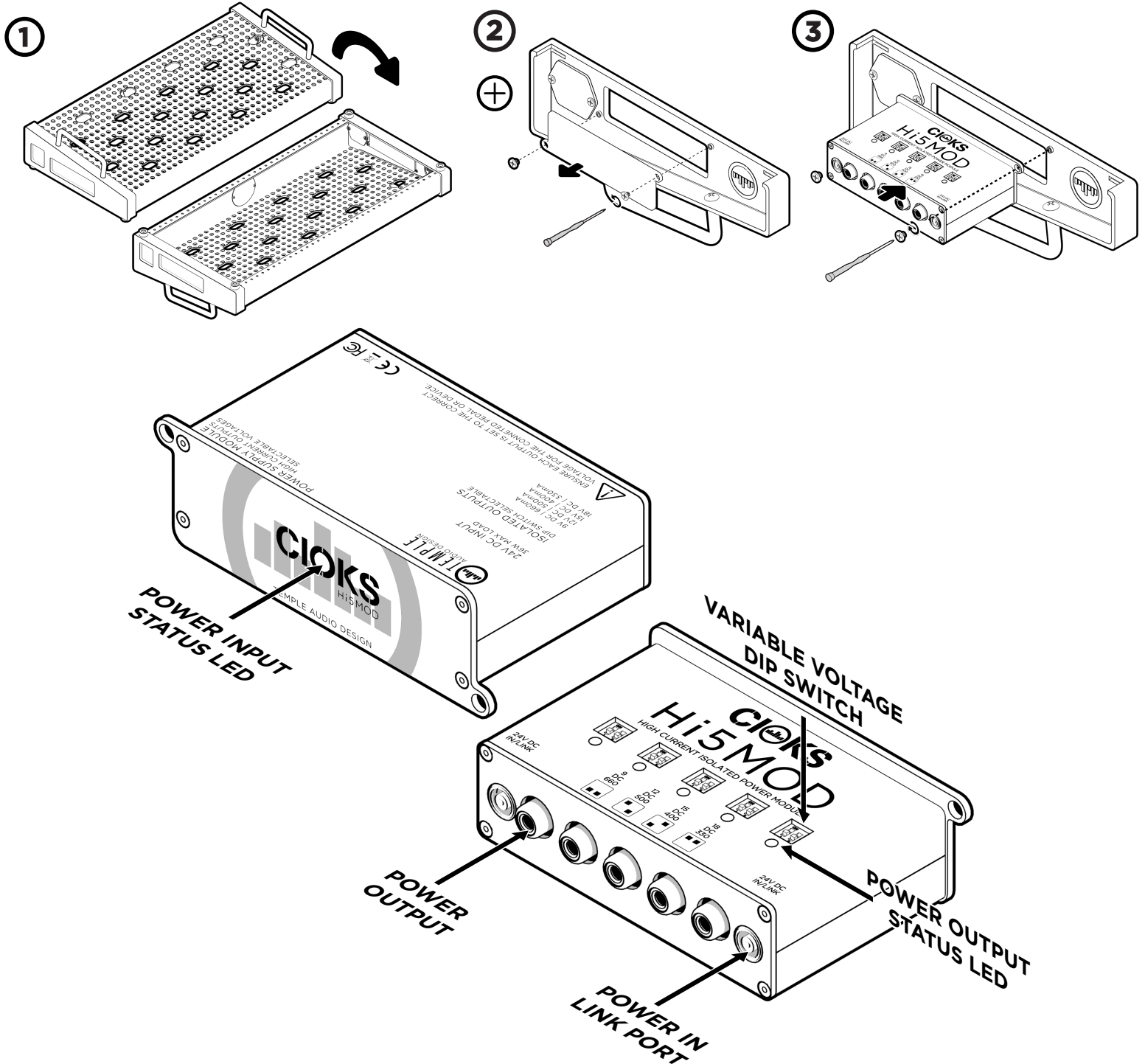


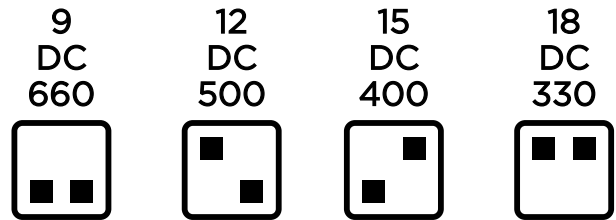
INSTALLATION



The Hi5 MOD is a high-current, isolated power module. It offers clean power across five outputs that easily integrate into the side of your Templeboard. The variable voltage offers flexibility to cater to most pedals' power requirements.

VARIABLE VOLTAGE

Each of the Hi5's outputs can be adjusted via two dip switches to match the input voltage on each of your devices. Each output provides clean isolated power so your tone is unaffected.



FLEX CABLES

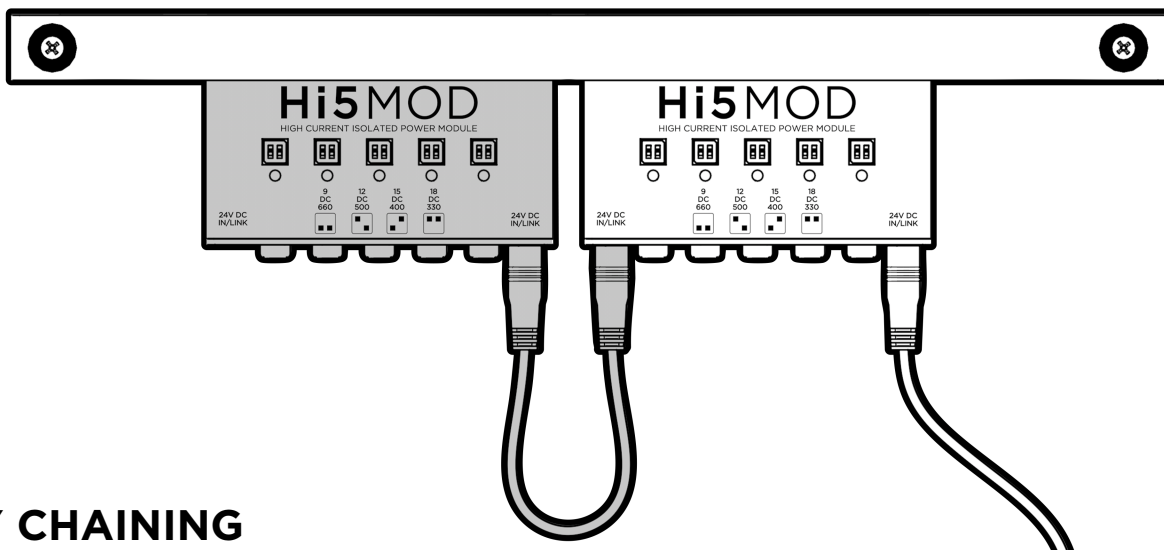
The Hi5 MOD includes various flex cables to power your pedals. including:

- (3) Flex Cable 1030 - 5.5/2.1mm, center negative, 12" (black)
- (2) Flex Cable 1050 - 5.5/2.1mm, center negative, 20" (black)
- (1) Flex Cable 2050 - 5.5/2.1mm, center positive, 20" (red)
- (1) Flex Cable 4050 - 5.5/2.5mm, center positive, 20" (green)
- (1) Flex Cable 1035 - 5.5/2.1mm, Split Flex, center negative, 12"+20" (black)
- (1) Flex Cable 1533 - 5.5/2.1mm, 3-way daisy chain 12"+12"+20" (black)

For additional cables, visit: cioks.com/accessories/flex-cables/ to see the whole range.

POWER IN/LINK PORT

We recommend our 65 Watt Power Supply, it mounts to your Templeboard and provides clean, reliable power. If a single Hi5 MOD isn't enough, just add a second. It's really that easy. The Hi5 was designed with two ports to allow you to link to a second or even a third Hi5. Depending on when you got your Hi5 it may have included a small link cable just for this



DAISY CHAINING

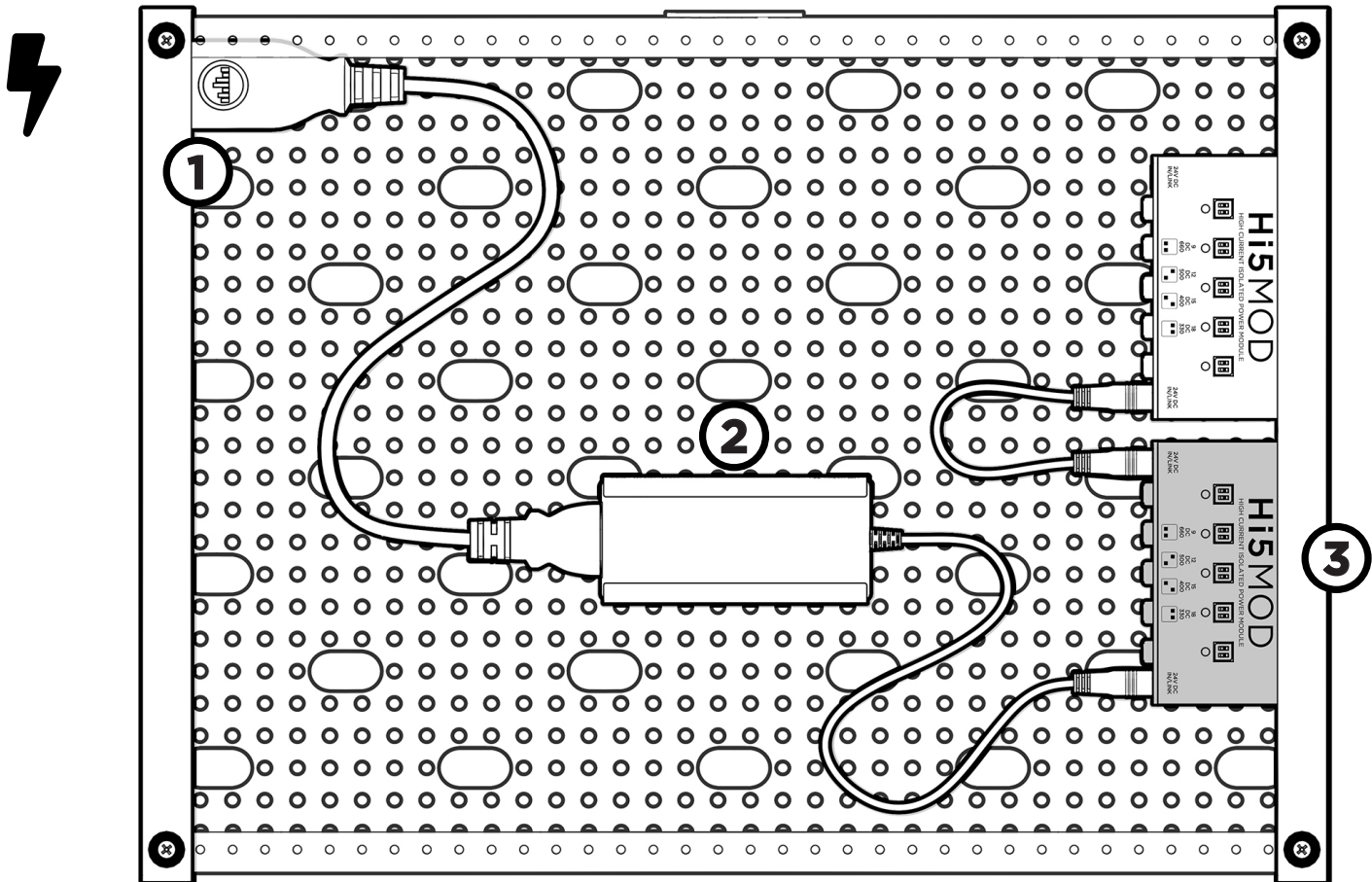
If you have more than five devices you need to power, it generally works to daisy chain analog pedals (compressors, overdrives, distortions, etc.), but digital pedals (reverbs, delays, modellers etc.) will generally want their own isolated output. This is not a hard and fast rule, but a general rule of thumb to get started.

Be sure to double check the output voltage on each channel is correct before powering your Templeboard.

TEMPLE POWER SERIES

This system is designed to be the cleanest, most modular and unobtrusive system to power your pedals. It has three parts:

1. IEC Mod or PowerCon Mod: Brings power from the wall to the side of your pedalboard
2. 65 Watt Power Supply: Converts your 120/240V wall power to the required 24V to your Hi5(s)
3. One or more Hi5 MODs



SPECS:

INPUT 24V DC 36W LOADED
OUTPUT 9V DC / 660mA 12V DC / 500mA 15V DC / 400mA 18V DC / 330mA



ENSURE THE OUTPUT VOLTAGE ON EACH CHANNEL IS SET TO
THE CORRECT INPUT VOLTAGE OF THE CONNECTED DEVICE.