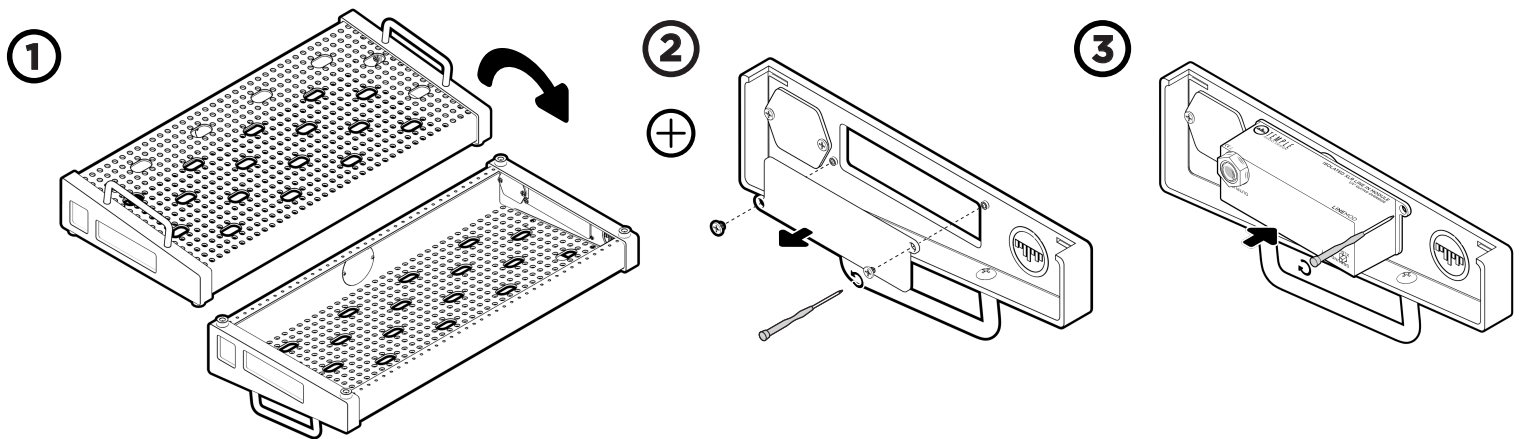


INSTALLATION

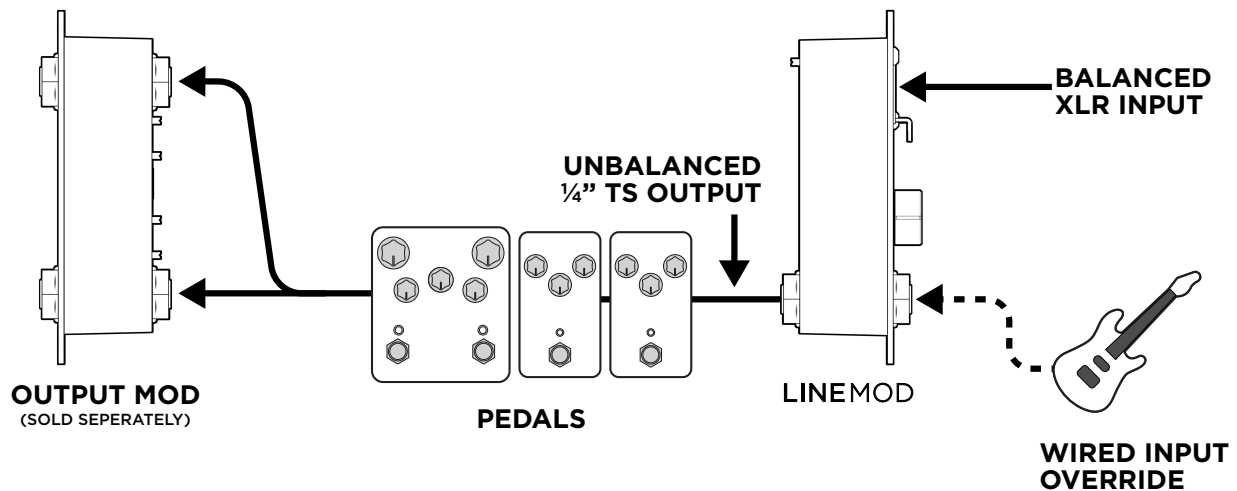


The Temple Audio LINE MOD mounts in the Modular End Cap of your Templeboard. It converts a balanced XLR input to a 1/4" TS unbalanced output.

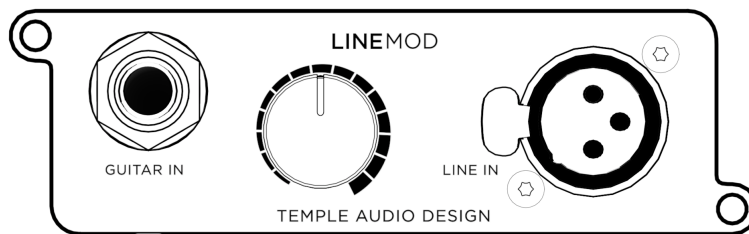
BASIC SETUP

The most common use case for the LINE MOD is to run a balanced XLR output from a rack-mounted wireless unit backstage to your pedalboard at the front of the stage. LINE MOD transforms the balanced XLR output to an unbalanced $\frac{1}{4}$ " signal that can then be run to your pedals.

The $\frac{1}{4}$ " input on the front is a wired override. If your wireless goes down (e.g. dead battery), plugging a $\frac{1}{4}$ " instrument cable into the GUITAR IN jack will override the XLR input.



The volume knob on the front of the MOD adjusts the level of the XLR input. It is a cut only and setting the knob at maximum volume will give you unity gain. This useful for matching the levels of your XLR and $\frac{1}{4}$ " inputs so that the input level to your pedals remains consistent whether you're in wired or wireless mode.



SPECIFICATIONS

Frequency Response: 20Hz - 20kHz, +/- 0.65dB

Max Level: 4Vrms (+12dBV)