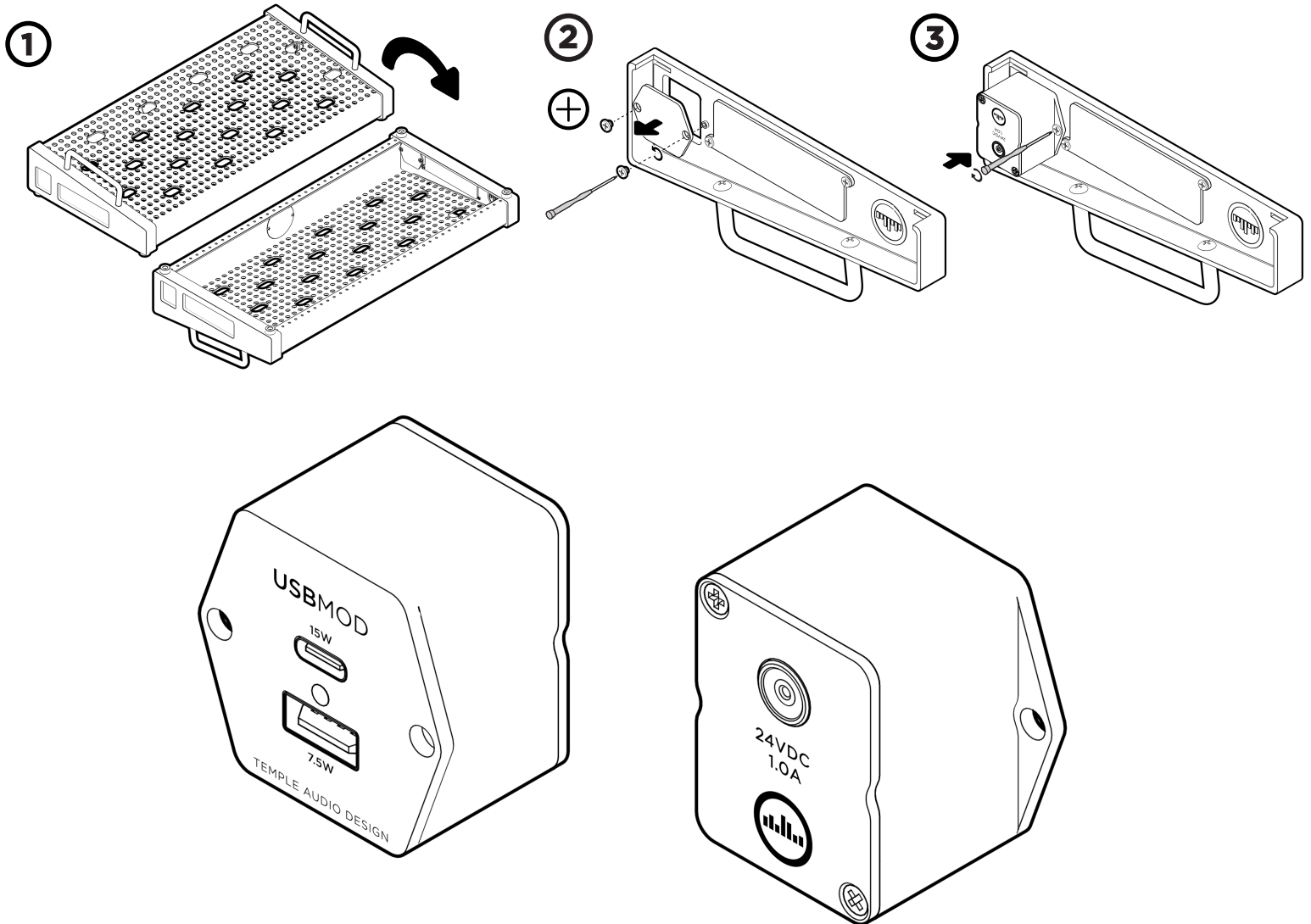


INSTALLATION



The Temple Audio USB MOD V2 is designed to provide convenient USB power directly from the side of your Templeboard. It features both USB-A and USB-C outputs, allowing you to power various devices simultaneously. This module is intended to be the last unit in your Temple Audio modular power signal flow. Mounts into the Micro MOD slot of your Templeboard's end cap.

Powering the USB MOD requires a 24V DC center pin negative power supply utilizing an EAIJ-3 (Cioks "Link") cable end. Temple Audio recommends their 65 Watt Power Supply as the primary power source. A typical setup involves chaining power from the 65 Watt Power Supply to a Hi5 MOD (or 2+). Then, use the included EAIJ-3 cable to connect from the output of the last Hi5 MOD in your chain to the power input on the back of the USB MOD V2.

TEMPLE POWER SERIES

This system is designed to be the cleanest, most modular and unobtrusive system to power your pedals. It has three parts:

1. IEC Mod or PowerCon Mod: Brings power from the wall to the side of your pedalboard
2. 65 Watt Power Supply: Converts your 120/240V wall power to the required 24V to your Hi5(s)
3. One or more Hi5 MODs
4. USB MOD V2

